



**ALASKA DIVISION OF HOMELAND  
SECURITY & EMERGENCY MANAGEMENT**

**Daily Situation Report**  
**25-223 August 11, 2025**



Toll-Free 1.800.478.2337

Anchorage Area 907.428.7000

SEOC 907.428.7100

<b><u>SEOC Preparedness Level</u></b>  Level 2 – Heightened Awareness	<a href="http://ready.alaska.gov">http://ready.alaska.gov</a>	<b><u>Alaska Military Installation Force Protection Level:</u></b> FPCON Bravo
<b><u>NTAS Bulletin</u></b> The U.S. Department of Homeland Security issued updated National Terrorism Advisory Bulletin on June 22, 2025. <a href="https://www.dhs.gov/national-terrorism-advisory-system">https://www.dhs.gov/national-terrorism-advisory-system</a>	<b><u>Maritime Security (MARSEC)</u></b>  Level - 1 Minimum Appropriate Security Measures	<b><u>Wildfires Preparedness Level</u></b>  Alaska Interagency Coordination Center - Level 2

(Significant changes from previous situation reports are red.)

**Significant Issues: SEOC at Preparedness Level 2 – Heightened Awareness**  
**Juneau Glacial Outburst Flood (GLOF) – Suicide Basin**

On Friday August 8, the Suicide Basin glacial dam, that feeds into Juneau's Mendenhall River, reached near capacity. The City and Borough of Juneau (CBJ) and the Tlingit-Haida Indian Tribes of Alaska issued a declaration of local disaster and requested state assistance to respond to the threat of Juneau community flooding from a glacial outburst flood. CBJ and Tlingit-Haida have done extensive pre-planning for this incident and have established for Unified Incident Command structure which was activated with their declarations.

On Saturday, in response to the imminent threat of flooding, Governor Dunleavy declared a state disaster emergency for the City and Borough of Juneau (see attached press release).

On Sunday evening, the National Weather Service issued a Special Weather Statement reporting that the glacial dam was beginning to overtop (flowing across the surface of Mendenhall Glacier), and while water in the basin had not yet released, a release was anticipated within the next few days.

Based upon pre-planned incident management action points, CBJ/Tlingit-Haida Unified Command issued public notices of the overtopping with notice that a release was expected within 1-6 days that would cause flooding on the Mendenhall River, and that now was the time to finalize preparations and evacuation plans. Similarly, based upon pre-planning, SEOC went to Level 2 – *Heightened Awareness* for this incident.

On Monday, SEOC deployed a Field Operations Section Chief to Juneau to integrate with the CBJ/Tlingit-Haida Unified Command and begin implementing the Governor's declaration of disaster with the full SEOC incident action planning process to support the Unified Command of CBJ and Tlingit-Haida Tribes who are leading this response.

Visit <https://www.weather.gov/ajk/suicideBasin> and <https://www.juneauflood.com/#/home> for more information.

### **Tracy Arm Earthquake → Landslide → Tsunami**

At 0526 AKDT on Sunday 8/10/25 an earthquake magnitude 3.3 was detected 60 miles SE of Douglas Island in the vicinity of Tracy Arm. This triggered a landslide and an ensuing local tsunami. Initial reports indicate that Sawyer Island (rising 100 ft above sea level) near the North Sawyer Glacier was stripped of alder trees. Kayakers camped on Harbour Island near the inlet of Tracy Arm were impacted by loss of equipment and a kayak. They were able to relocate to Juneau with no injuries or additional losses reported.

### **Coastal Storm – West Coast of Alaska**

The NWS and SEOC are tracking the progress of a coastal storm that is expected to bring strong winds, heavy rain and high surf advisories from the Seward Peninsula southward along the Yukon Delta Coast. Nome is expected to have the highest water with wave forecast to be 2 - 4 feet above mean high tide during this event. The storm also brings heavy rain with some areas receiving 2.5 inches of rain over 48 hrs in effect through late Tuesday night/Wednesday morning.

### **Department of Health (DOH):**

For resources and current information, see: <https://health.alaska.gov/en/>

### **Travel Alerts and Conditions: No active alerts**

For current driving conditions, dial 511 or visit: <https://511.alaska.gov/>

### **Barry Arm Landslide / Tsunami Risk:**

For the latest information on the Barry Arm Landslide and Tsunami risk, click here:

<https://dggs.alaska.gov/hazards/barry-arm-landslide.html>

### **Earthquakes:**

United States Geological Service (USGS) Earthquake Information:

<https://www.usgs.gov/programs/earthquake-hazards>

National Tsunami Warning Center: <https://tsunami.gov/>

### **Alaska Volcanoes:**

**Great Sitkin** Alert Level: **Watch** and Aviation Color Code: **Orange**

**Mt. Spurr** Alert Level: **Advisory** and Aviation Color Code: **Yellow**

For Alaska Volcano updates, go to: <https://www.avo.alaska.edu/>

### **Air Quality Index (AQI) Advisories: No active advisory/episodes**

For the most up-to-date Air Quality Index Advisories:

<https://dec.alaska.gov/Applications/Air/airtoolsweb/Advisories>

### **Spills of Oil and Hazardous Substances: No active spill responses**

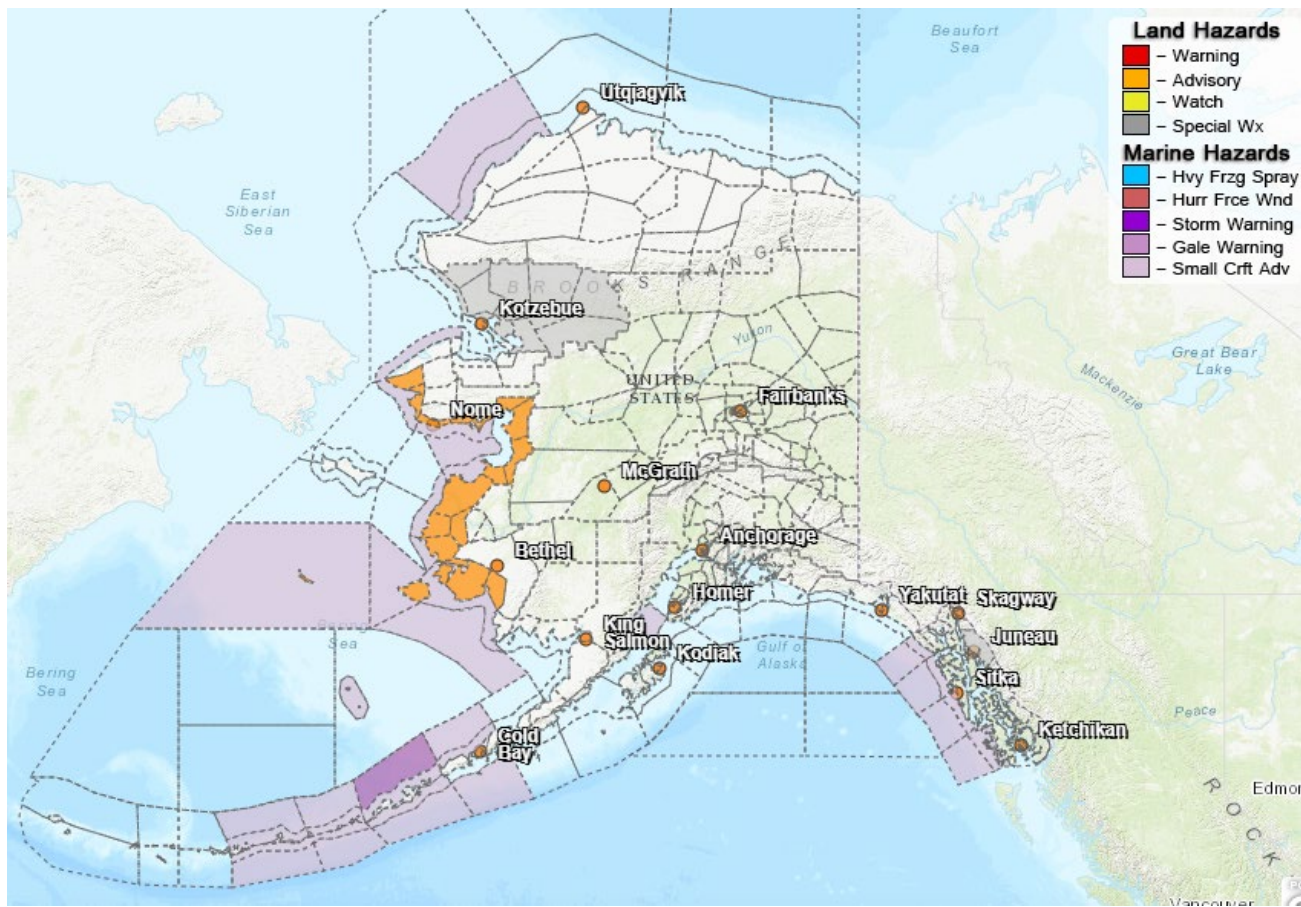
The Alaska Division of Environmental Conservation (ADEC) Spill Prevention and Response page is located at: <https://dec.alaska.gov/spar/ppr/spill-information/response/>

### **Alaska Cyber Security Information: No current published alerts notices**

State Employees may sign up for cybersecurity notifications and alerts at:

<https://oit.alaska.gov/security>

## Significant Weather:



**Hydrologic Outlook – City and Borough of Juneau:** Signs of overtopping at Suicide Basin, see notes above for more information.

**High Surf Advisory – Kuskokwim Delta Coast and Nunivak Island:** 10 AM this morning to 10 PM Tuesday. Water levels 1 to 2 feet above the normal highest tide line, wave heights between 4-8 feet. Localized coastal erosion may occur.

**High Surf Advisory – Bering Strait Coast; Southern Seward Peninsula Coast; Eastern Norton Sound and Nulato Hills; Yukon Delta Coast:** 4 AM this morning to 1 AM Wednesday. Water levels of 2-4 feet above normal high tide line, with localized beach erosion possible.

**Hydrologic Outlook – South Slopes of the Western Brooks Range; Noatak Valley; Kivalina and Red Dog Dock; Lower Kobuk Valley; Upper Kobuk Valley:** Prolonged Heavy Rain Monday through Wednesday in the Western Brooks Range, total rainfall of 2-4 inches from a prolonged heavy rain event.

**For more information,** go to <https://weather.gov/arh>

## Alaska Wildland 2025 Fire Season:

The Alaska Interagency Coordination Center is at Preparedness Level 2

Total Fires Year to Date: 420

Total Acres: 995,320 There are currently 177 active fire(s) with 0 new and 6 fires staffed.

For more information, go to <https://fire.ak.blm.gov/> or <https://akfireinfo.com/>

## **Evacuation orders:**

FNSB & Nenana Ridge Complex Evacuation Zone Monitor – Himalaya, Aggie, and Nenana Ridge Complex evac zones and TFR lifted

**The Next Situation Report** will be on **August 12, 2025**. A significant change in situation or threat level will prompt an interim report. This report is posted on the internet at <https://ready.alaska.gov/sitrep>. To register for email distribution, PLEASE go to: <http://list.state.ak.us/mailman/listinfo/dhsem.situation.report>. Direct questions regarding this report to the SEOC at 907-428-7100 or [seoc@alaska.gov](mailto:seoc@alaska.gov).